


# OPERATIONAL EXCELLENCE IN ENTERPRISE ASSET MANAGEMENT

Excellence Through Assets, Work Processes, and People Alignment to  
Achieve an Ideal State of Performance



3350 Scott Blvd, Bldg. 34 Santa Clara, CA 95054  
Phone: +1 877-849-5838 [www.acnsol.com](http://www.acnsol.com)



Organizations can achieve operational excellence can by effective execution of their business strategy. Companies can increase competitive advantage by operational excellence in the business processes, productivity, and value to the customer. Operational excellence in the asset-intensive industries is defined as follows: Excellence through assets, Work Processes, and People alignment to achieve an ideal state of performance.

Organizations must have a comprehensive inclusion of enterprise asset management (EAM) related processes at the strategic level, and they must facilitate operational execution. By having high operational excellence in the form of the right technology, people, and procedures, companies can have an enormous impact on top and bottom-line results. To achieve operational excellence, preventive maintenance planning, and the effective scheduling of all maintenance work need to be done in an integrated manner and supported by work management technology and processes. Organizations need to transition from reactive to preventive and predictive maintenance.

The benefits of such an effort are many folds. It improves equipment reliability, lowers operational risk, increases productivity, and decreases downtime resulting in reduced costs for organizations and enhanced value to customers by way of machine availability. Another benefit is the extended equipment life, which reduces costs by allowing organizations to defer capital expenditures to replace equipment. All these are the highlighted advantages of having operational excellence in your enterprise asset management.

## **Paths Towards Operational Excellence**

To achieve operational excellence in asset-intensive companies, companies need to go through the journey from reactive maintenance management to predictive maintenance management. There are several paths to achieve this. We have defined them in three principal categories: reactive, preventive, and predictive.

Companies must know their current state and evaluate it against the desired state to understand precisely where they need to begin in the journey of operational excellence.



### Reactive

- Limited planning and scheduling
- Do not have documented Standards
- Tend to schedule at a work order level, have little or no tracking of maintenance plan in Compliance
- Lack actionable insights and analytics, and do not have standardized data or a plan for master data governance.

### Preventive

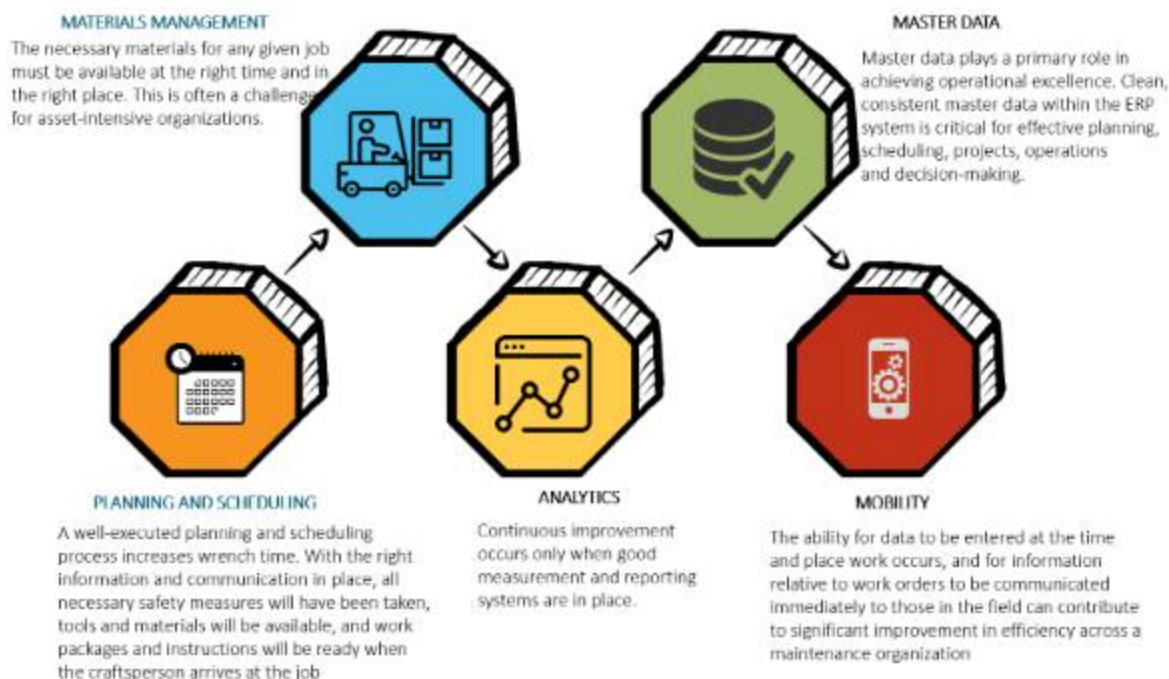
- Schedule at a task level with an increasing focus on preventive tasks
- Documented processes and follow them most of the time
- Greater linkage between maintenance plans and compliance; may have a view of data, although it is not necessarily actionable; and perform occasional data clean up.

### Predictive

- It is characterized by complete scheduling including tasks, materials, and tools
- Standardized and documented processes that are consistently followed; a tight linkage between the maintenance plan and compliance
- Integrated approach to planning, scheduling, and work management; actionable analytics and insights

## An Integrated Approach for Operational Excellence

Organizations can employ an integrated approach to operational excellence if they have standardized processes, systems, and data. Everyone in the organization, including people developing predictive maintenance strategy, managing shutdowns, turnarounds, planning & scheduling production orders, should have access and visibility to the same data and systems. This visibility to every stakeholder will facilitate vastly improved communication across operations, projects, and maintenance. There are five critical elements for an integrated approach that need to work in tandem.





## Operational Excellence is Achievable

Accrete Solutions understands the importance of your enterprise assets, improving their performance, and increasing the ROA (Return on Assets). To help the asset-intensive organizations achieve their operational goals, Accrete has put in their best efforts and domain knowledge to develop IoT-enabled Asset Management solutions. The solution will allow organizations to plan and execute their mission-critical production activities, minimize shutdowns while increasing asset uptime with reduced costs & risk.

