



SAP Integration with Joule and AI: The Era of Intelligent Enterprise Solutions

Introduction

Artificial intelligence (AI) is revolutionizing business, and SAP is at the forefront with Joule, an AI-based digital assistant designed to enhance enterprise efficiency. Joule is seamlessly integrated into SAP's ecosystem, delivering real-time insights, automation, and a user-friendly conversational interface.

With the aid of AI, Joule streamlines operations, anticipates trends, and enhances business decision-making. In this article, we explore how Joule enhances SAP solutions, outlines its key features, and discusses its impact on businesses.

Key Joule and AI Integration with SAP Features

Its ability to provide **contextual insights and predictive analytics is at the core of Joule's capabilities**. Using AI, Joule scans large data sets to generate real-time business intelligence. Companies can predict market trends, understand customer behavior, and create more accurate demand forecasts. As a result, decision-making becomes more strategic and data-driven.

Beyond analytics, Joule enhances operational efficiency by **automating repetitive tasks**. From routine data entry and document processing to managing approval workflows across HR, finance, and procurement, Joule alleviates the manual load on teams. It also supports customer service operations through AI-powered chatbots, helping to resolve common queries faster and more efficiently.

A standout feature of Joule is its **Natural Language Processing (NLP)** capabilities. Users can interact with SAP applications using everyday language, whether through voice or text. This means someone could simply ask, "What is my current sales forecast?" and receive an instant, accurate response. By removing natural language processing, Joule makes data more accessible to everyone in the organization.

Joule's **seamless integration** across SAP's cloud portfolio—including SAP S/4HANA, SAP Success Factors, and more—ensures consistent, unified access to data across departments.

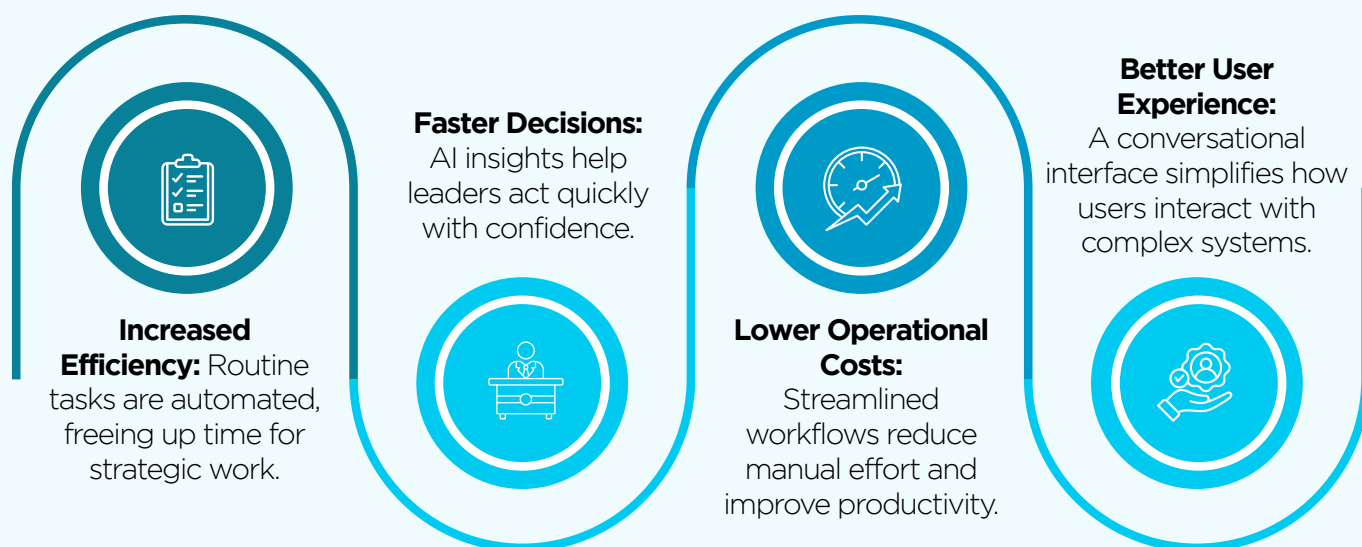
such as finance, HR, supply chain, and CRM. This interconnectedness enables real-time collaboration and agile workflows, making SAP's suite of tools more powerful and scalable.



Real-Life Scenario: Joule in Action

Imagine a regional sales manager preparing for a quarterly review. Instead of juggling multiple reports and tools, they simply ask Joule, “What are the top-performing products in APAC this quarter?” Within seconds, Joule gathers data from SAP S/4HANA and SAP Analytics Cloud, highlights key trends, and even recommends areas to upsell based on past customer behaviour.

Or consider a procurement lead seeking to understand supplier delays. They ask, “Which suppliers have missed delivery deadlines this month?” Joule instantly retrieves supplier performance data and flags trends, helping leaders act before small delays turn into major organisations Work toward building smarter systems and more connected processes. Tools like Joule become essential. Here’s how Joule makes a difference:



Glimpsing the Future: What's Next for Joule

Joule is already integrated into SAP Success Factors and SAP Analytics Cloud, with upcoming rollouts planned for SAP Customer Experience, SAP Ariba, and SAP S/4HANA Cloud. As SAP’s ecosystem evolves, Joule will continue to grow as a core enabler of the intelligent enterprise, bringing automation, foresight, and intuitive interaction into every layer of business.



In Conclusion

SAP's vision for the future is deeply rooted in intelligent enterprise solutions, and Joule is a major step forward in that journey. By blending AI with deep enterprise integration, Joule doesn't just support business operations—it transforms them.

Want to see Joule in action? Explore how SAP's AI-powered assistant can streamline your business. Contact SAP today



Please reach out to Accrete at accrete@acnsol.com/+1 877-849-5838 for any additional information or help that you may need.

USA

#211 Suite 100, 22722 29th
Dr SE, Bothell, WA 98021

Noida

The Iconic Corenthum 1st & 2nd floor,
Sector 62, Noida-201301

South Africa

609 Lanseria Corporate Estate, Falcon
Lane, Lanseria, Gauteng