



# SAP BTP: INTEGRATION AND DEVELOPMENT CAPABILITIES



[www.acnsol.com](http://www.acnsol.com)

As organizations continue to digitize and move to the cloud, there is a growing need for effective integration and development capabilities. SAP Business Technology Platform (BTP) offers organizations a comprehensive range of services and tools for building cloud-based application development and integration. By leveraging BTP platform capabilities, organizations can easily integrate various systems, optimize processes and data sources, automate workflows, and drive growth.

In this article, we'll examine SAP BTP's primary integration and development functions and discuss how enterprises may take advantage of them to unlock new revenue streams and stay competitive in the face of evolving market demands.

## SAP BTP Integration Capabilities

BTP integration capabilities include pre-built integrations for popular third-party applications, a rich set of APIs, pre-built integration flows, and integration tools that allow for custom integrations. BTP also provides integration services such as data mapping and transformation, data quality and governance, and real-time data synchronization.

With SAP BTP integration capabilities, businesses can achieve greater agility, faster time-to-market, and improved data accuracy, leading to better decision-making for better business outcomes.

### API Management

A

API (Application Programming Interface) management is crucial for organizations seeking to expose their data and services as APIs. SAP BTP's centralized API management allows businesses to create, manage, and monitor APIs in a secure and scalable manner. It provides a centralized platform for API management that allows businesses to restrict unauthorized access, monitor usage, and enforce policies for their APIs. By providing a secure and scalable platform for API management, SAP helps businesses to integrate multiple systems, improve data flow and provide transparent access to business users.

B

### Data Integration

SAP BTP data integration capabilities enable businesses to integrate and analyze data from diverse application landscapes and ecosystems to make informed decisions. Support for on-premises, cloud-based systems, and databases, also aid various integration options such as batch processing, real-time processing, and data streaming to unlock the full potential of their data and gain a competitive edge in the market.

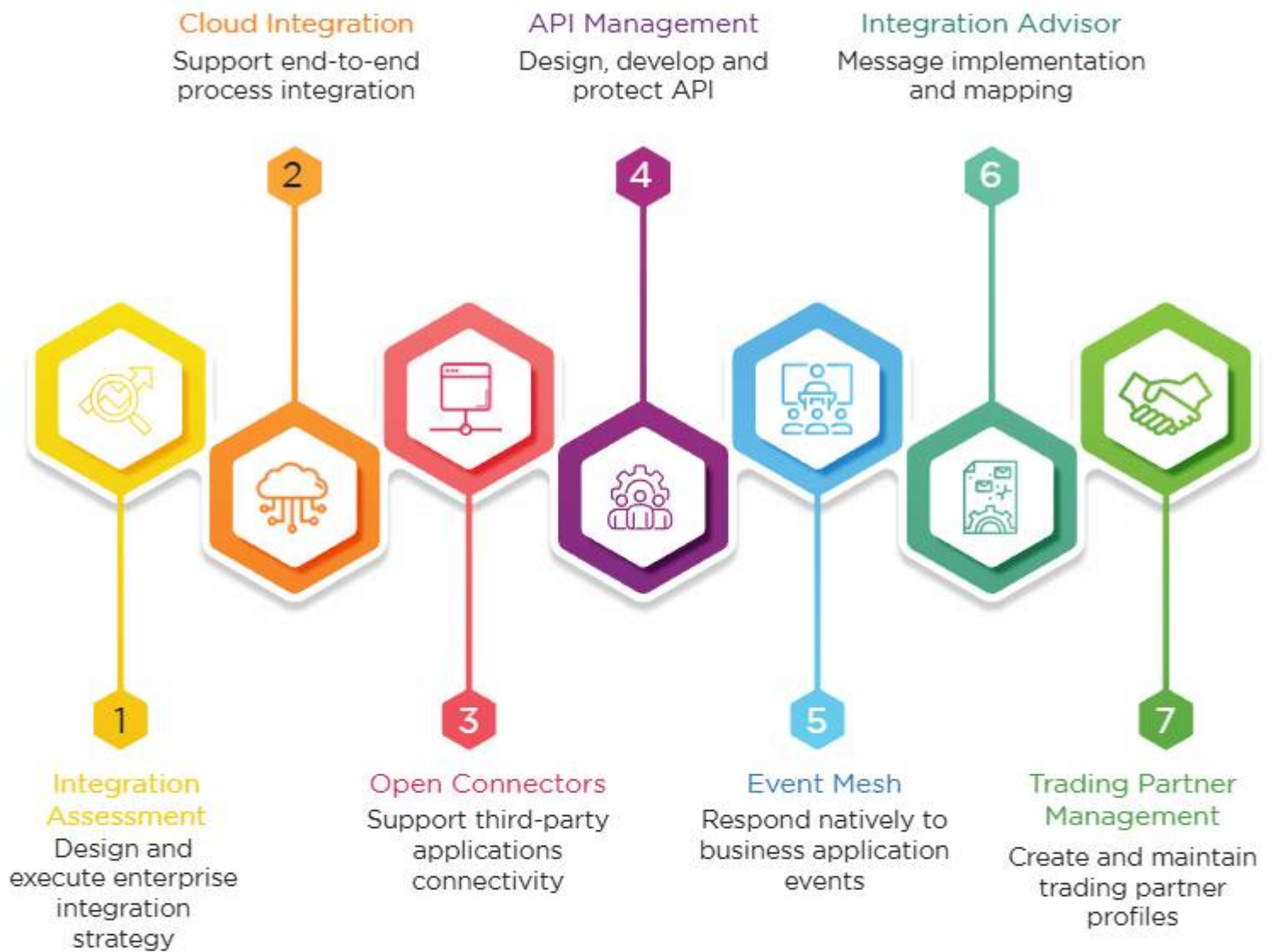
C

### Process Integration

SAP BTP's process integration capabilities allow companies to integrate business processes across their entire IT landscape. The platform offers a comprehensive integration solution to connect disparate systems and streamline business processes. By leveraging BTP Process Integration, businesses can increase efficiency, reduce manual work, and improve data accuracy.

Below we have listed the other SAP core capabilities of SAP integration suit.

## SAP Integration Suite capabilities



## SAP BTP Development Capabilities

BTP Development capabilities provide a flexible and scalable platform that supports a wide range of programming languages, frameworks, and development tools. This allows developers to easily build custom applications and integrate them with existing systems, reducing time-to-market, and increasing agility.



## SAP Web IDE

SAP Web IDE is a cloud-based development environment for building, testing, and deploying SAP Fiori apps, SAPUI5 applications, and SAP HANA XS applications. Organizations can benefit from the ease of collaboration, faster development, low development costs, streamlined deployment, and simplified management that SAP Web IDE provides. Additionally, SAP Web IDE supports modern development practices like continuous integration and delivery, making it an ideal choice for businesses looking to enhance their digital capabilities.

## SAP Cloud Platform SDK for iOS and Android

The SAP Cloud Platform SDK for iOS & Android provides developers with tools to build enterprise-grade mobile apps with pre-built UI components, offline capabilities, & secure authentication. It offers additional features like offline synchronization and security, inventory management, field service, and customer engagement.

## SAP Cloud Application Programming Model

SAP Cloud Application Programming Model is a development framework offered by SAP BTP, that provides a unified and efficient approach to building applications in the cloud. With SAP Cloud Application Programming Model (CAP), businesses can develop, deploy, and operate cloud-native applications that are scalable, flexible, and responsive to changing business needs.

## SAPUI5 for building responsive web applications.

SAPUI5 is a user interface development toolkit that enables the development of responsive web applications that cater to different devices and platforms. Provides technical features such as data binding, routing, and internationalization for streamlined business processes.

## How Medical Device Manufacturers leverage SAP BTP Integration capabilities?

Let us explore some use cases and see how medical device manufacturers have achieved rapid scalability and innovation with SAP S/4HANA implementations leveraging SAP BTP integration capabilities. Organizations design high-viscosity therapeutic devices, aiming to bring millions of units to market with their pharma partners and revolutionize how patients receive treatment for critical diseases like cancer, Parkinson's, rheumatoid arthritis, and more. Life science companies needs a smart solution capable of tracking manufactured products and ensuring that they meet regulatory standards as per FDA regulations. The core challenge most pharmaceutical firms deal with is that they have millions of medical devices, meeting compliance requirements and getting FDA approval for every device is a challenging and time-consuming process. All this delays the product's launch to the market.

Harnessing the power of SAP BTP integration, companies get a fully integrated system, capable of tracking many manufactured products. SAP BTP integration also ensures seamless integration with the company's partners, which enables them to quickly access and analyze data, and foster more informed decision-making. SAP BTPs analytics capabilities provide them a holistic view of market patterns to quickly identify trends and sales to develop business strategies. SAP BTP empowered system supports finance and costing, production planning, materials management, product lifecycle management, quality

management document management, and more processes. It helps the company automate business processes to meet tedious FDA requirements, including training, traceability, recall handling, documentation, and tightening control over the supply chain. This helps reduce the amount of paperwork, reduce manual efforts, and ensure smooth business processes that

Keep the supply chains running efficiently.

Ensure meeting regulatory standards as per FDA compliance.

Automated and streamlined processes ensure traceability and safety.

This BTP based solution enables medical device manufacturers and pharmaceutical firms to enhance their overall business capabilities, deliver faster and smarter services to meet industry-specific requirements.

## Get SAP BTP Integration and Development capabilities

In conclusion, in a fiercely competitive business environment, companies are under immense pressure to improve their operations, reduce costs, and drive revenue. SAP Business Technology Platform (BTP) offers a comprehensive suite of integration and development capabilities that enable businesses to unlock new levels of efficiency, agility, and innovation. With its vast array of tools and services, SAP BTP has become an indispensable asset for companies looking to stay ahead of the curve and remain competitive in an ever-evolving market.



Please reach out to Accrete at [accrete@acnsol.com](mailto:accrete@acnsol.com) for any additional information or help that you may need.

### USA

7116 252nd Avenue NE  
Redmond, WA 98053

### Noida

The Iconic Corenthum  
1st & 2nd floor, Sector  
62, Noida-201301

### South Africa

609 Lanseria Corporate  
Estate, Falcon Lane,  
Lanseria, Gauteng