

How to transfer data from SAP/Non-SAP systems to SAP HANA

by Ankit Gupta, Accrete Solutions

Data Provisioning: Data provisioning is a process of creating, preparing and enabling a network to provide the data to its user. Data needs to be loaded to SAP HANA before it reaches to the user via a front-end tool. To implement SAP HANA, different methods are used for Data Provisioning to transfer the data from both SAP Business suite application or from a third-party systems to SAP HANA.

Methods of Data Provisioning:

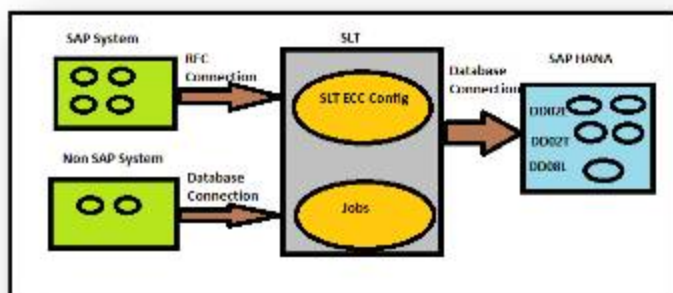
1. **SAP Landscape Transformation (SLT):** This method is used to transfer the data in real-time.
2. **Data Services (DS):** This method is used to transfer the data in batch mode.
3. **Smart Data Access (SDA):** This method is specially designed to transfer the data from a Non-SAP system.
4. **Flat Files (FF):** Data in Excel or CSV format, then this method is used to transfer the data.

SAP Landscape Transformation:

SAP Landscape Transformation (SLT) is one way that an organization can choose to implement SAP HANA. The key technology behind SLT is its ability to perform real-time source system trigger-based replication of data from both an SAP Business suite application or from a third-party source. The mechanism that SLT uses for replication is commonly referred to as trigger-based replication.

Key benefits of choosing SLT to implement SAP HANA:

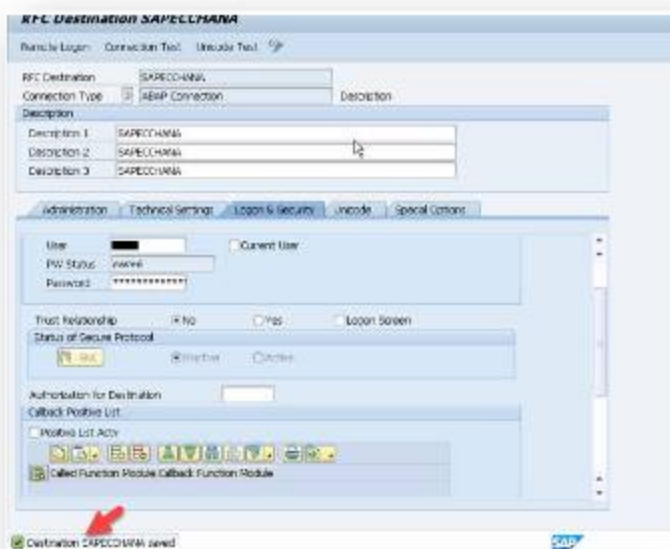
1. Real-Time Access to Data
2. Use of SAP HANA Live
3. Reduced complexity
4. Increased flexibility



Real-Time Trigger-Based Replication

Described below are steps to setup SLT:

1. **Create RFC connection:** Create RFC connection between SAP ECC and SLT using T-code SM59.



2. **SLT configuration:** Use T-code LTRC to create a SLT configuration. Whenever you need to create new configuration then delete existing one from the system because we have limited system resources. Execute the T-code LTRC and maintain following information:

- a. **Specify General Data:** Like configuration name and description.

b. Specify Source System: In this, we will enter the RFC connection which we have created in step 1 along with the DB connection details. DB connection details are related to SAP HANA system like hostname, instance number, Administration username, and password.

c. Specify Transfer Setting: Here we will specify the jobs related information.

d. Review and Create.

No. Tables	Failed	In Process	Initial Load	Replication	LogTab	No LogTab	Trg. Active	No Trg. Act.
2			1	3			3	

Table Name	Logging Table	Failed	In Process	Current Action	Tab. Cat.	Trg. Master	Log. Tab.	Created	Trigger Status
CO0A	(LCO0MG)20000049			Replication	TRMSP	1			Activated
CO0T	(LCO0MG)20000050			Replication (Initial Load)	TRMSP	1			Activated
CO0L	(LCO0MG)20000051			Replication	TRMSP	1			Activated

Options available in SLT:

1. Start DATA Load: This option is used to load all the data from source to HANA. Logging tables will not be created in this and real-replication will not be done.

2. Start Replication: This option is used to have real-time replication with historical data. All the data loaded to SAP HANA and logging tables will be created in source system for real-time replication.

3. Stop Load/Replication: If we do not want to transfer the data then we use this option. When we stop the replication then the system will not transfer the data to logging tables as well.

4. Suspend Load/Replication: Replication is stopped for the table, but logging tables will be there in the source system.

5. Resume Load/Replication: In this option, we can resume the replication for suspended tables. Once we resume the load then system will start the transfer of data from logging tables to SAP HANA.

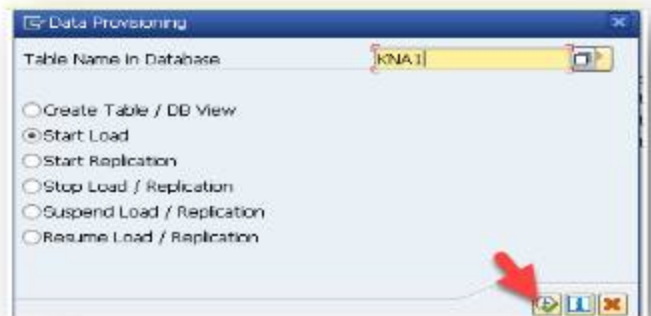


3. Schema: When we create the configuration then the system automatically creates the schema with the same name for below tables in SAP HANA. These tables are system tables in SAP ECC and stores all the information related to Tables.

a) DD02L: Stores metadata related to SAP Tables.

b) DD02T: Text related to SAP Tables.

c) DD08L: Stores relations between SAP Tables.



For all enquiries please contact at : corp@accretesol.com , Tel : +1(877)-849-5838
Visit us at : www.accrete-solutions.com

USA
Head Office
3350 Scott Blvd, Bldg 34
Santa Clara, CA 95054

South Africa
609 Lanseria Corporate Estate,
Falcon Lane, Lanseria,
Gauteng

Chile
Galvarino Gallardo 1638,
Providencia,
Santiago

India
Development Centre
102A, HARTRON, Electronics City,
Gurgaon